

Au Fil du Tricot



BENEDICTE'S SCARF

Benedicte is a dear friend of mine. We did the same study and end up both went to Canada.

It's one of my first design and it's time to give it some love back.

The use of heavy worsted yarn and V cable is the perfect combination for a fast and entertaining project.



Design by Sidney Rakotoarivelo

MATERIALS

YARN

Artfil Aran

- Heavy Worsted – Aran.
- 100% Merino Wool SuperWash.
- 172yds (157m) for 100g.

The sample cowl was made with the colorway Laguna and uses 90g.

SUPPLIES

US size 8 (5mm). They can be straight or circular, use the one you're more comfortable with.

Cable needle.

Tapestry needle.

Wooden button, 5cm diameter.

GAUGE

22 sts and 21 rows: measured over 4" (10cm) of blocked V cable.

The gauge is not crucial for this project. But differences will result in a different yardage need.

The scarf is knitted loose, feel free to go up a needle size.

DIMENSION

Laid flat, the scarf measures 36" (91cm) length and is 6" (15cm) wide.

STITCH ABBREVIATIONS

2/2 LC: Slip next 2 stitches to cable needle and place at front of work, k2, then k2 from cable needle. K: knit.
P: purl.

2/2 RC: Slip next 2 stitches to cable needle and place at back of work, k2, then k2 from cable needle. Sl: slip stitch purlwise with yarn in the back.
Sl wyif: slip stitch purlwise with yarn in the front.

All stitches are slipped purlwise unless the contrary is indicated.

DIRECTIONS

Benedicte's scarf is a rectangle worked flat. The I-cord edge gives it a nice and clean finish.

The cable worked over 16 stitches is easy to remember, quick and entertaining.

The sample uses one big wooden button to keep the cowl closed over the neck. Feel free to add another one on the other side, just remember to do another buttonhole on the same row.

I placed the button on the opposite side of the buttonhole and 23" (58cm) away from the bind-off.

PATTERN STITCHES

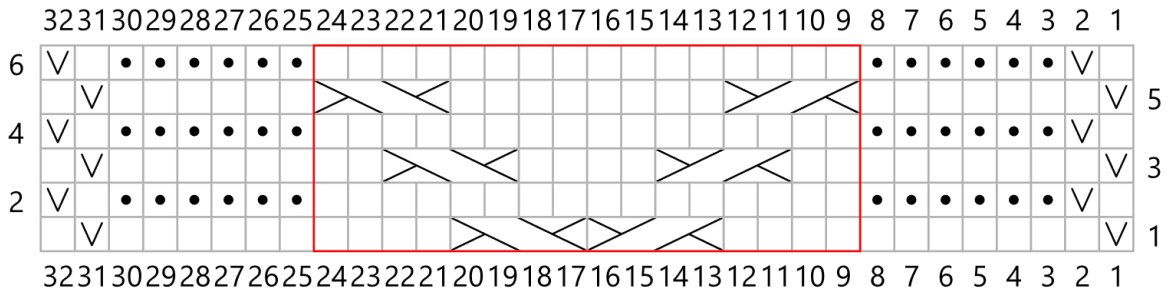
V CABLE

Row 1 (RS): K4, 2/2 RC, 2/2 LC, k4. (16 sts)

Row 3: K2, 2/2 RC, k4, 2/2 LC, k2.

Row 2 and all WS rows: Purl.

Row 5: 2/2 RC, k8, 2/2 LC.



RS: knit
WS: purl

RS: slip purlwise with yarn in back
WS: slip purlwise with yarn in front

RS: purl
WS: knit

 2/2 RC

 2/2 LC

V cable

REMINDER

2/2 LC: Slip next 2 stitches to cable needle and place at front of work, k2, then k2 from cable needle.

2/2 RC: Slip next 2 stitches to cable needle and place at back of work, k2, then k2 from cable needle.

K: knit.

P: purl.

Sl: slip purlwise with yarn in the back.

Sl wyif: slip stitch purlwise with yarn in the front.

PATTERN

With US size 8 needle, cast on 32 stitches.

Row 1 (RS): Sl, k11, 2/2 RC, 2/2 LC, k10, sl, k1.

Row 2 and all WS rows: Sl wyif, p1, k6, p16, k6, sl wyif, p1

Row 3: Sl, k9, 2/2 RC, k4, 2/2 LC, k8, sl, k1.

Row 5: Sl, k7, 2/2 RC, k8, 2/2 LC, k6, sl, k1.

Repeat those 6 rows 30 more times.

Row 181: Sl, k1, bind off 6 sts, k4, 2/2 RC, 2/2 LC, k10, sl, k1.

Row 182: Sl wyif, p1, k6, p16, cast on 6 sts, Sl wyif, p1.

Work row 3 to 6 as usual.

Work the 6 first rows one more time.

Bind off all stitches, weave in ends and lightly block.

Try on the scarf and see where you want the button to be placed.

Sew and secure it.

Enough knitting for today, now go out and enjoy winter!!

© Sidney Rakotoarivelo 2018. Photography by Raphaël Chapot.

All rights reserved. This pattern is for personal use only. Feel free to contact me for a commercial use.